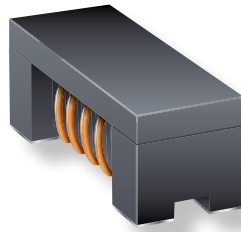




PRODUCT CHANGE NOTIFICATION

INDUCTIVE COMPONENTS



REVISED MARCH 16, 2021

Bourns Announces Relocation of Manufacturing Plant

Model SRF4530A and SRF4530AG Series Common Mode Chip Inductors

Riverside, California – August 7, 2019 – Effective ~~October 31, 2019~~ **April 3, 2021**, the manufacturing plant for the Bourns® Model [SRF4530A](#) and [SRF4530AG](#) Common Mode Chip Inductor Series will relocate to a larger manufacturing facility to accommodate the increasing production demands for these inductors.

When the relocation is completed, the higher capacity, cross-town facility in Malaysia will help enable Bourns to expand its production capacity for these chip inductor series. APQP will be assessed and reliability tests on samples produced from the new plant will be performed to ensure their ongoing AEC-Q200 compliance, and PPAP reports for applicable part numbers will be updated.

There will be no design, material or manufacturing process change related to the relocation of the manufacturing plant. The form, fit, function, quality, reliability, production lead time and the country of origin of these components will remain the same.

Affected Part Numbers			
SRF4530A-101Y	SRF4530A-110Y	SRF4530A-220Y	SRF4530A-510YH
SRF4530A-101YH	SRF4530A-201Y	SRF4530A-510Y	SRF4530AG-201Y

Implementation dates are as follows:

Date that production will cease at existing plant: ~~October 31, 2020~~ **April 3, 2021**

Date that deliveries will begin at new plant: ~~November 1, 2020~~ **April 4, 2021**

First date code using the above changes: ~~2045 2114~~

If you have any questions or need additional information, please feel free to contact [Customer Service/Inside Sales](#).

Users should verify that the described changes will not impact the performance of the product in their specific applications.

IC1961REV